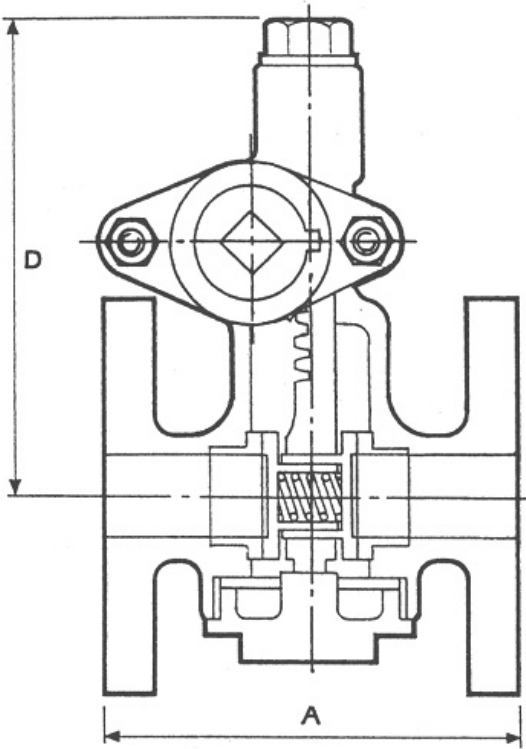




Parallel Slide Blowdown Valve Class 250

Series 733LG



Component	Material
Body	Bronze - CC491K (LG2)
Bonnet	Bronze - CC491K (LG2)
Seats	Nickel Alloy
Discs	Nickel Alloy
Stem	Bronze
Pinion	Mang Bronze
Locking Gland	Bronze

Pressure Temperature Ratings

Temp°C		Working Pressure Bar
-10	120	40.0
	150	38.5
	170	35.5
	180	34.0
	186	32.8
	198	30.4
	200	30.0
	220	25.5
	250	19.5
	260	17.5

Cast Bronze Body and Cover.

Valve operated through a half of a removable box key (For 25mm/1" sizes specify Fig 733K25 for all other sizes specify Fig 497A40).

Flanged to ANSI.BS.or European Standards

Size		A		D		Weight kg
mm	ins	mm	ins	mm	ins	
25	1	127	5	146	5¾	7
32	1¼	146	5¾	181	7⅛	10
40	1½	165	6½	238	9⅜	13